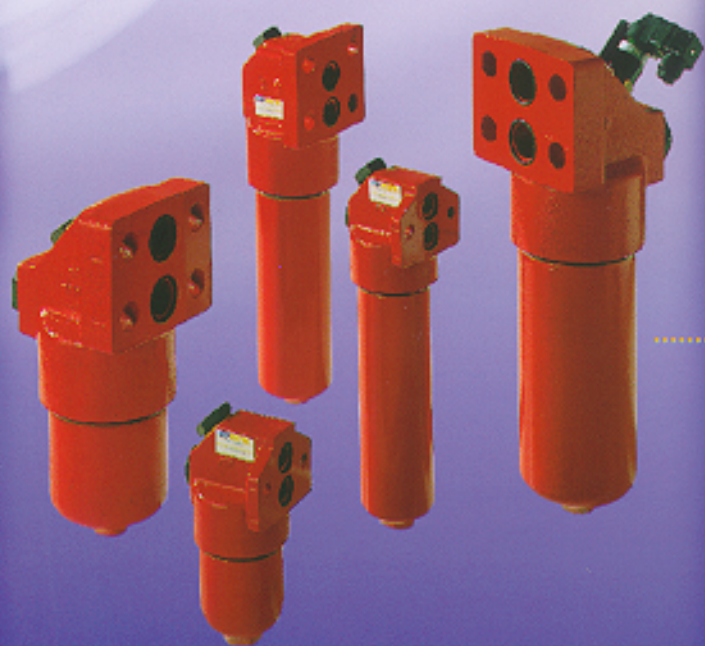


FHB SERIES

I N-LINE FILTER



MPFILTRI
filtri per oleodinamica



Maximum working pressure 320 bar

Flow rates to 400 l/min

Description

FHB

FHB series filters are designed for pressure line applications where manifold mounting is a specific requirement.

The manifold type filters are designed to integrate onto manifold valve systems to provide a compact low pressure loss and leak free installation.

Continued research and development on both the filter bodies and the filter elements has resulted in a product line with excellent pressure drop characteristics combined with a high filtration efficiency.

A complete line of pressure differential visual and electrical indicators are available with this series of filters.

FHB series filters are available with Reverse Flow Valve.

FHB series filters within this range are suitable for flow rates to 400 l/min. See page 12.

FHB series are suitable for industrial machinery steel and process application.

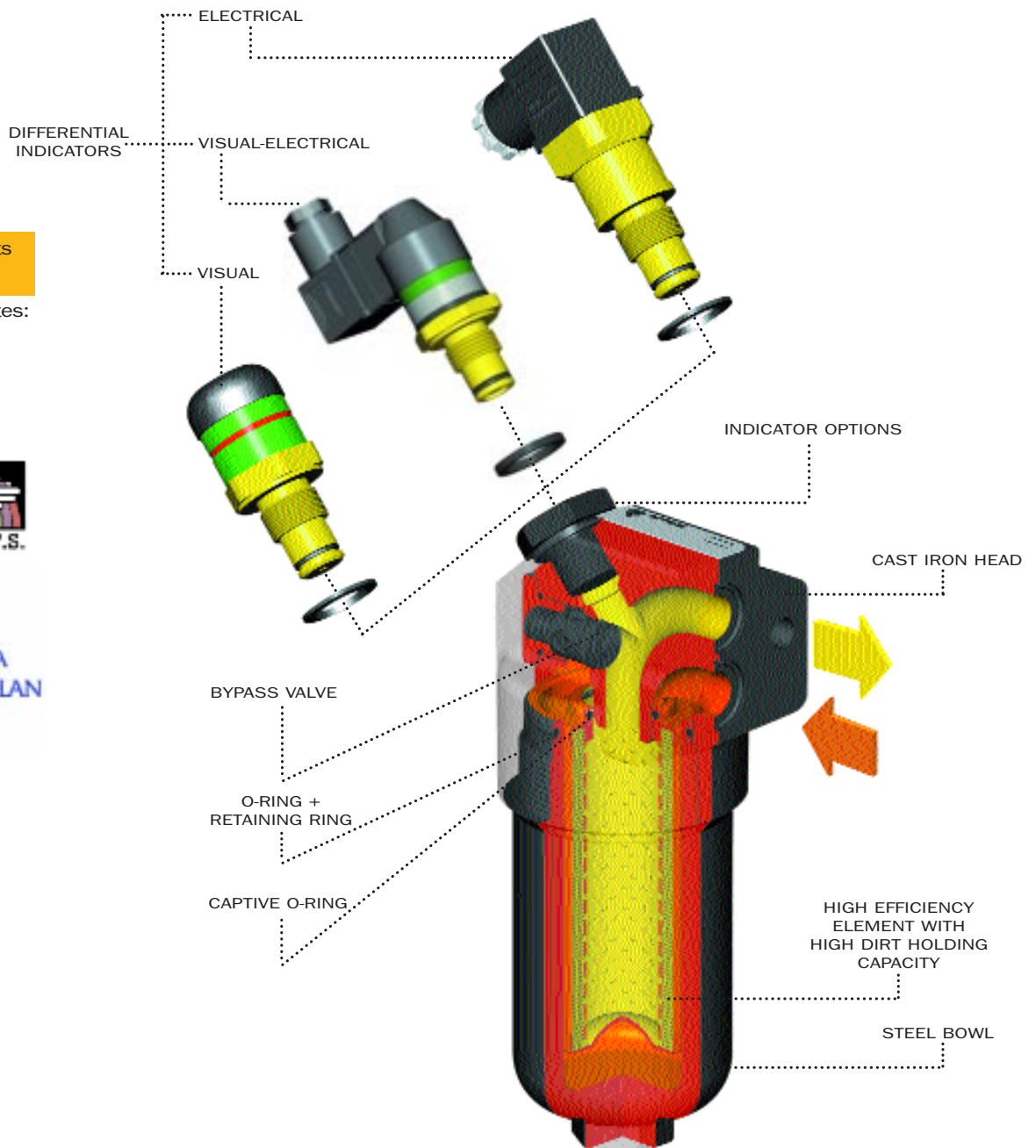
New

absolute filter elements
independently tested
in the following Institutes:

Institute of Filtration
(France)



Royal Institute of Technology



Filter element:

Filter element material

End caps:

Steel (Thermal treatment)

Support tube:

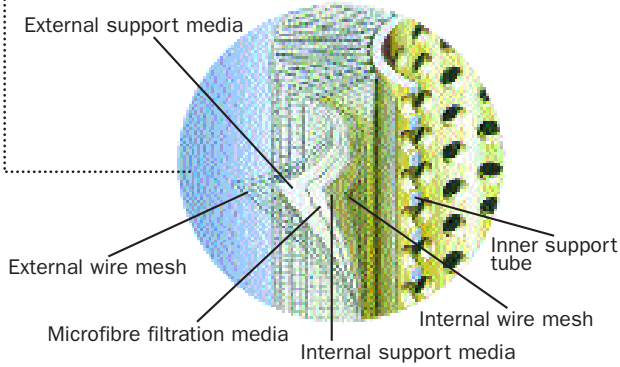
Steel (Thermal treatment)

Support frames:

Coated wire cloth

A Series

Inorganic microfibre



MP Filter elements - Conform to the following ISO standards

- ISO 2941 - Verification of collapse/burst resistance.
- ISO 2942 - Verification of fabrication integrity and determination of the first bubble point.
- ISO 2943 - Verification of material compatibility with fluids.
- ISO 3723 - Method for end load test.
- ISO 3724 - Verification of flow fatigue characteristics.
- ISO 3968 - Evaluation of pressure drop versus flow characteristics.
- ISO 4572 - Multi-pass method for evaluating filtration performance.

Element material Absolute filtration

A Series

New material:

Inorganic microfibre with acrylic support

Contamination retention
as per ISO 4572: Multi-pass test.

New improved $\beta \geq 200$ filter elements with greater efficiency and increased dirt holding capacity

| Filter elements | Dimensions for $\beta(\mu\text{m})$ values | | | | Filtration ratios | | | ΔP (bar) |
|-----------------|--|-----------------------|-------------------------|--------------------------|-------------------|--------------|--------------|------------------|
| | $\beta \geq 2$ (50%) | $\beta \geq 20$ (95%) | $\beta \geq 75$ (98,7%) | $\beta \geq 200$ (99,5%) | β_2 | β_{10} | β_{20} | |
| A03 | - | 2 | 2,4 | 3 | 20 | >10.000 | >10.000 | 7 |
| A06 | - | 3 | 4,6 | 6 | 8 | > 2.000 | >10.000 | 7 |
| A10 | 3 | 6 | 7,8 | 10 | 1,5 | ≥ 200 | >10.000 | 7 |
| A25 | 13 | 19 | 22 | 25 | - | > 1,5 | > 35 | 7 |

N.B. Other materials giving different degrees of filtration are available on request.

| Type HP | 065-1 | 065-2 | 065-3 | 135-1 | 135-2 | 320-1 | 320-2 | 320-3 | 320-4 |
|---------|-------|-------|-------|-------|-------|-------|-------|-------|-------|
| A03/A06 | 386 | 546 | 1098 | 895 | 1879 | 1512 | 3326 | 5428 | 7544 |
| A10/A25 | 386 | 546 | 1098 | 895 | 1879 | 1512 | 3326 | 5428 | 7544 |

Values in cm^2

| Type HP | 065-1 | 065-2 | 065-3 | 135-1 | 135-2 | 320-1 | 320-2 | 320-3 | 320-4 |
|---------|-------|-------|-------|-------|-------|-------|-------|-------|-------|
| A03/A06 | 386 | 544 | 1094 | 777 | 1655 | 1475 | 3258 | 5341 | 7425 |
| A10/A25 | 386 | 544 | 1094 | 777 | 1655 | 1475 | 3258 | 5341 | 7425 |

Values in cm^2

Filtering area Filter elements N - ΔP 20 bar

Filtering area Filter elements H - ΔP 210 bar

Element material Nominal filtration

M Series

Square wire mesh (filtration degree is defined in microns by the maximum diameter of a sphere corresponding to the mesh size)

T Series

Triangular stainless steel wire mesh

Filtering area Filter elements N - ΔP 20 bar

| Type HP | 065-1 | 065-2 | 065-3 | 135-1 | 135-2 | 320-1 | 320-2 | 320-3 | 320-4 |
|---------|-------|-------|-------|-------|-------|-------|-------|-------|-------|
| M10 | 374 | 530 | 1064 | 950 | 2020 | 1650 | 3645 | 5970 | 8280 |
| M25 | 374 | 530 | 1064 | 950 | 2020 | 1650 | 3645 | 5970 | 8280 |
| M60 | 374 | 530 | 1064 | 950 | 2020 | 1650 | 3645 | 5970 | 8280 |

Values in cm^2

Filtering area Filter elements T - ΔP 80 bar

| Type HP | 065-1 | 065-2 | 065-3 | 135-1 | 135-2 | 320-1 | 320-2 | 320-3 | 320-4 |
|---------|-------|-------|-------|-------|-------|-------|-------|-------|-------|
| T10/T25 | 385 | 545 | 1090 | 710 | 1500 | 1670 | 3690 | 6040 | 8380 |

Values in cm^2

Filter body:

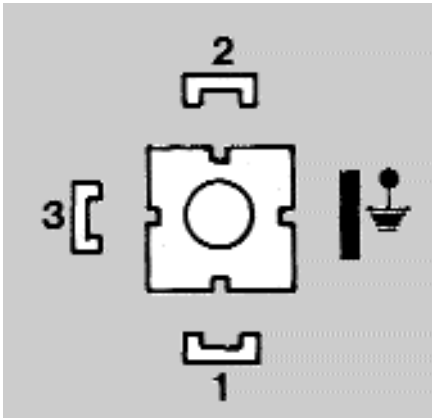
| | | | |
|--|---|--|--|
| Materials | Head Cast iron (Thermal treatment) | Bypass valve Brass | |
| | Bowl Steel (Thermal treatment) | Reverse flow (Only for 135/320 series) Steel | |
| | Seals A Series: Nitrile (Buna-N) V Series: Viton | Indicator Brass (with viton seals) | |
| Working temperature | From -25 to +110°C For temperatures outside this range, please consult our Sales Network Organization | | |
| Pressure filter body | Maximum working pressure up to 320 bar Test pressure: 420 bar Minimum burst pressure: 840 bar | Fatigue test: a filter body subjected to pressure impulses from 0 to 320 bar will withstand 1.000.000 cycles | |
| Collapse pressure filter elements | | N Series: 20 bar H Series: 80 bar H Series: 210 bar | |
| Bypass valve Calibration pressure | Bypass valve, differential opening pressure: | B: 6 bar ± 10% | |
| Compatibility with fluids | Filter head and bowls compatible for use with: <ul style="list-style-type: none"> • mineral oils (types HH-HL-HM-HR-HV-HG as per ISO 6743/4) • water-based emulsions (types HFAE-HFAS as per ISO 6743/4) • synthetic fluids (types HS-HFDR-HFDS-HFDU as per ISO 6743/4) • water-glycol (types HFC as per ISO 6743/4) | Filter elements As per ISO 2943; suitable for mineral oils (types HH-HL-HM-HR-HV-HG as per ISO 6743/4) and synthetic fluids (A and M series only) (types HS-HFDR-HFDS-HFDU as per ISO 6743/4) For water-based emulsions (types HFAE-HFAS as per ISO 6743/4) and fluids other than those mentioned, please consult our Sales Network Organization. | |
| | Seals A Series Nitrile (Buna-N) compatible with mineral oils (types HH-HL-HM-HR-HV-HG as per ISO 6743/4) | water-based emulsions (types HFAE-HFAS as per ISO 6743/a) water - glycol (types HFC as per ISO 6743/4) V Series Viton compatible with synthetic fluids (types HS-HFDR-HFDS-HFDU as per ISO 6743/4) | |
| Types of indicators | (Complete with Viton seals) Description: FHB series filters are fitted with indicators switching at a pressure of 5 bar ± 10% (for N elements series) 7 bar ± 10% (for H and T elements series) 10 bar ± 10% (for H and T elements series) | | |
| Visual indicator | With bypass 5 bar setting: V7 Series | Without bypass 7 bar setting: V8 Series | Without bypass 10 bar setting: V9 Series |
| Electrical indicator | With bypass 5 bar setting: N7 Series | Without bypass 7 bar setting: N8 Series | Without bypass 10 bar setting: N9 Series |
| Visual-electrical indicator | With bypass 5 bar setting: E7-K7* Series | Without bypass 7 bar setting: E8-K8* Series | Without bypass 10 bar setting: E9-K9* Series |
| | *For K visual-electrical indicator, specify the voltage (f.i. K71 = LED 24 volt) | | |
| | | | $\left. \begin{array}{l} 1 - 24 \text{ Volt} \\ 2 - 115 \text{ Volt} \\ 3 - 230 \text{ Volt} \end{array} \right\}$ |

MP Filtri - Specification

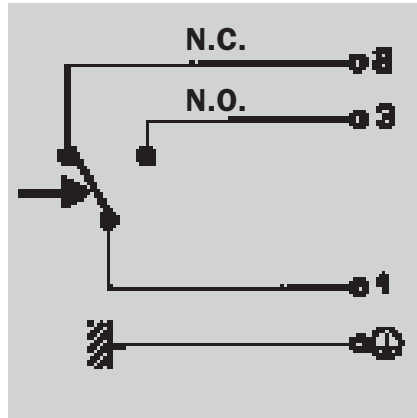
K - E - N Series

| Supply voltage (50/60 Hz) | Resistive load | Inductive load |
|---------------------------|----------------|----------------|
| (V) | (A) | (A) |
| Vca 125 | 5 | 2 |
| Vca 250 | 5 | 2 |
| Vcc 30 | 5 | 3 |
| Vcc 125 | 0,5 | 0,03 |
| Vcc 250 | 0,25 | 0,03 |

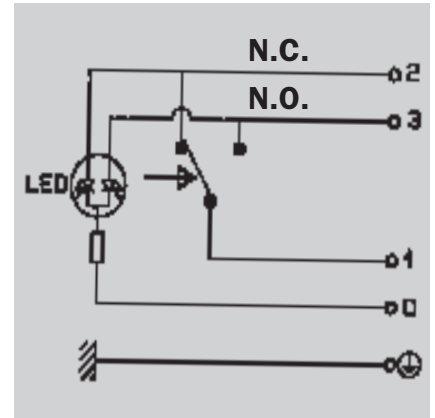
CONNECTOR DIN 43650



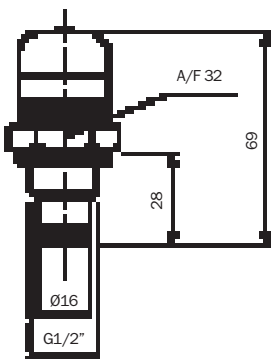
ELECTRICAL CONNECTION E - N SERIES



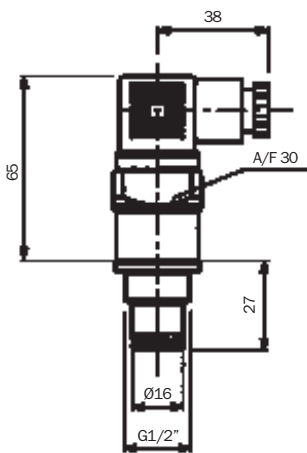
ELECTRICAL CONNECTION K SERIES



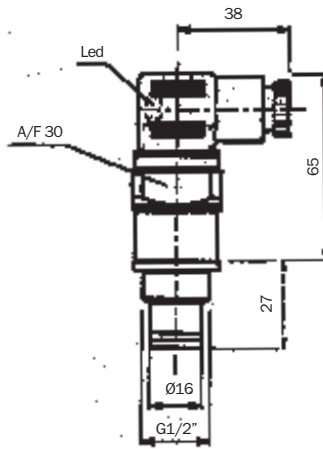
Visual V series



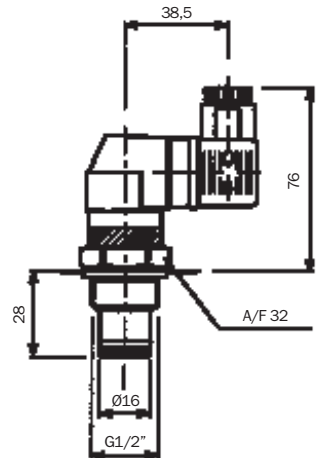
Electrical N series



Visual - Electrical K series



Visual - Electrical E series



Selection & installation information

Filter Elements types

A Series

Absolute inorganic microfibre filtration media, available in 3, 6, 10 and 25 micron
Example - **A03, A06, A10** or **A25**

M Series

Metal mesh media, available in 10, 25 and 60 micron
Example - **M10, M25** or **M60**

T Series

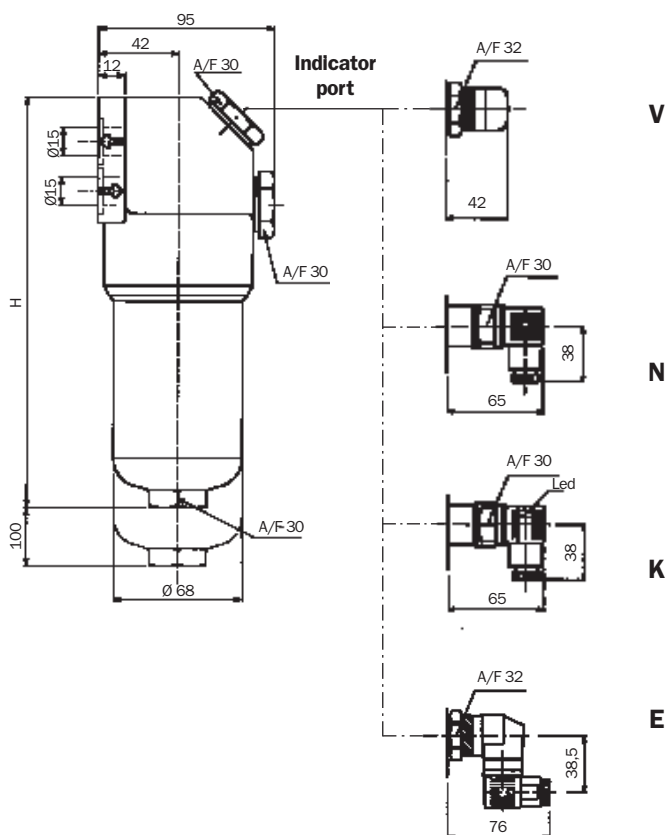
Triangular stainless steel mesh media, available in 10, 25 micron
Example - **T10, T25**

Please refer to individual pressure drop curves to obtain filter assembly pressure drop information

The following filter sizing recommendations are based using a mineral oil fluid at 30 mm²/s (cSt), with a maximum filter assembly (housing and filter element) pressure drop of 25% of the filter condition indicator (1.25 bar)

FHB 065

FHB 065 SERIES



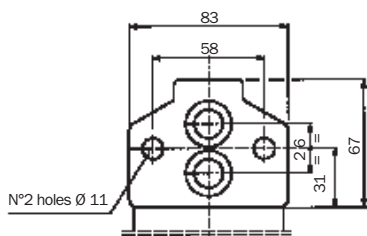
| Filter assembly | Flow rate l/min N series * | Flow rate l/min H-T series * | Bowl length | Port size BSP/NPT/SAE | Weight kg ** |
|-----------------|-------------------------------------|---------------------------------------|-------------|--------------------------|--------------------|
| A03 | 18 | 15 | 1 | - | 3,0 |
| A06 | 20 | 18 | | | |
| A10 | 35 | 32 | | | |
| A25 | 50 | 48 | | | |
| T10 | - | 75 | 2 | - | 3,6 |
| A03 | 22 | 18 | | | |
| A06 | 35 | 25 | | | |
| A10 | 50 | 45 | | | |
| A25 | 75 | 65 | 3 | - | 4,0 |
| T10 | - | 90 | | | |
| A03 | 35 | 30 | | | |
| A06 | 60 | 50 | | | |
| A10 | 75 | 65 | - | - | 4,0 |
| A25 | 90 | 80 | | | |
| T10 | - | 110 | | | |

* Flow rates with 30 mm²/s fluid viscosity
** Weight including filter element

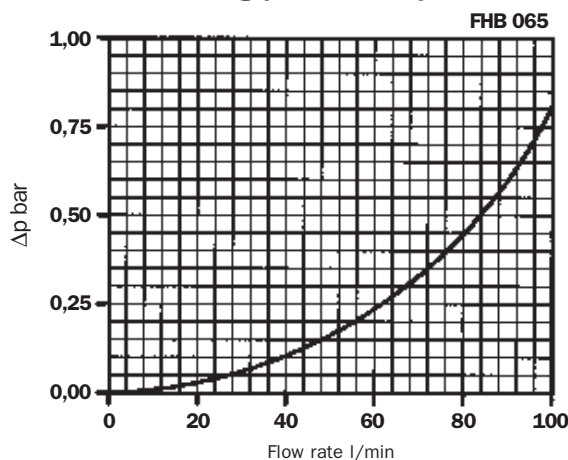
Lengths

| Type | H |
|------|-----|
| 1 | 188 |
| 2 | 210 |
| 3 | 315 |

FRONT VIEW



Housing pressure drop curve



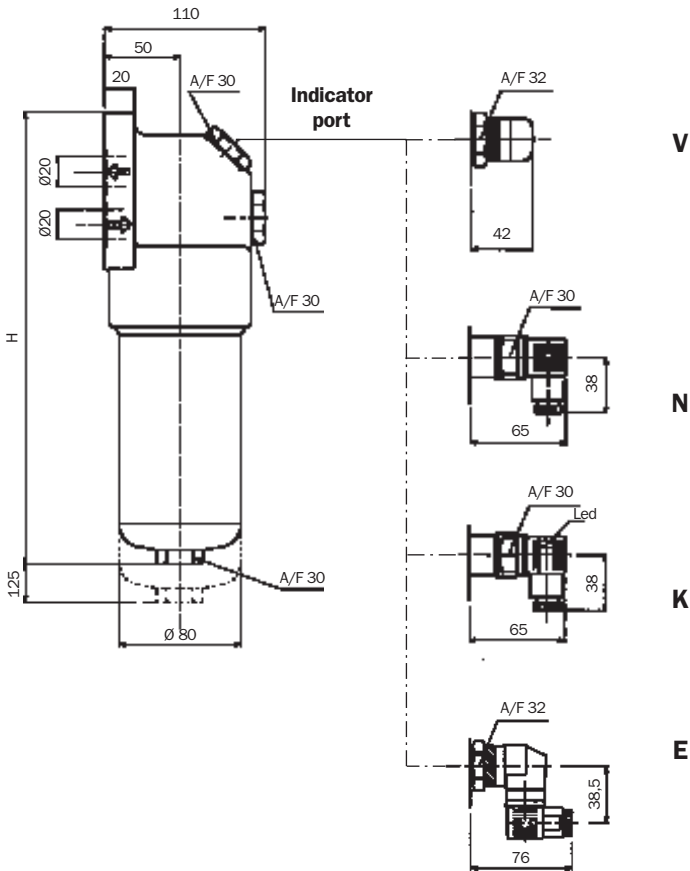
Selection & installation information

Please refer to individual pressure drop curves to obtain filter assembly pressure drop information

The following filter sizing recommendations are based using a mineral oil fluid at 30 mm²/s (cSt), with a maximum filter assembly (housing and filter element) pressure drop of 25% of the filter condition indicator (1.25 bar)

FHB 135

FHB 135 SERIES

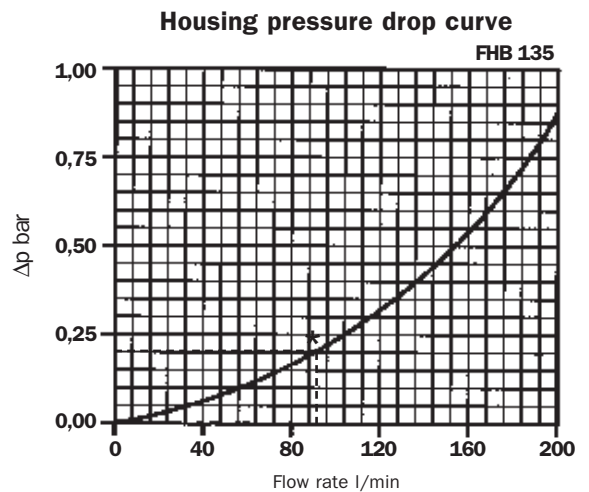
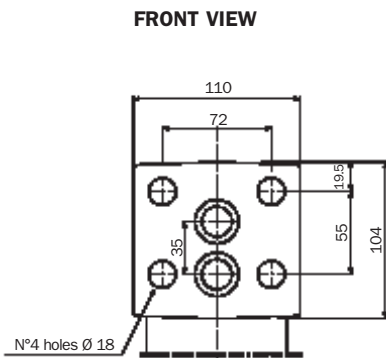


| Filter assembly | Flow rate l/min N series * | Flow rate l/min H-T series * | Bowl length | Port size BSP/NPT/SAE | Weight kg ** |
|-----------------|-------------------------------------|---------------------------------------|-------------|--------------------------|--------------------|
| A03 | 50 | 35 | 1 | - | 6,7 |
| A06 | 60 | 50 | | | |
| A10 | 80 | 60 | | | |
| A25 | 100 | 75 | | | |
| T10 | - | 150 | 2 | - | 8,1 |
| A03 | 100 | 80 | | | |
| A06 | 110 | 90 | | | |
| A10 | 140 | 120 | | | |
| A25 | 180 | 150 | | | |
| T10 | - | 180 | | | |

* Flow rates with 30 mm²/s fluid viscosity
 ** Weight including filter element

Lengths

| Type | H |
|------|-----|
| 1 | 271 |
| 2 | 385 |

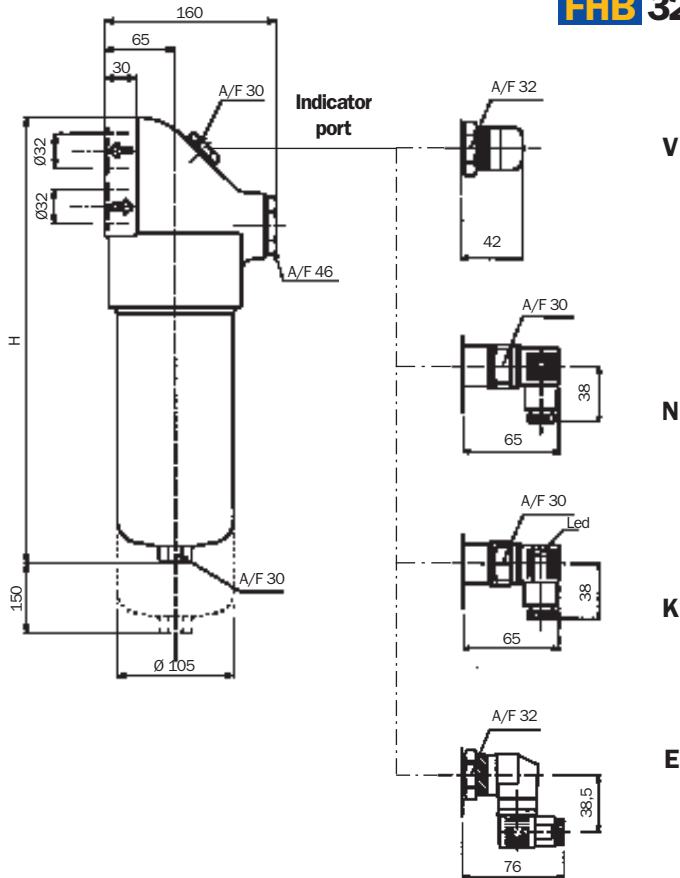


Selection & installation information

Please refer to individual pressure drop curves to obtain filter assembly pressure drop information

The following filter sizing recommendations are based using a mineral oil fluid at 30 mm²/s (cSt), with a maximum filter assembly (housing and filter element) pressure drop of 25% of the filter condition indicator (1.25 bar)

FHB 320



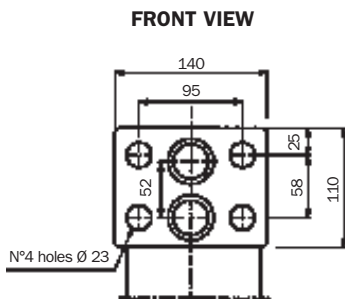
FHB 320 SERIES

| Filter assembly | Flow rate l/min N series * | Flow rate l/min H-T series * | Bowl length | Port size BSP/NPT/SAE | Weight kg ** |
|-----------------|-------------------------------------|---------------------------------------|----------------|--------------------------|--------------------|
| A03 | 100 | 65 | 1 | - | 13,0 |
| A06 | 120 | 80 | | | |
| A10 | 140 | 100 | | | |
| A25 | 180 | 150 | | | |
| T10 | - | 200 | 2 | - | 15,0 |
| A03 | 210 | 150 | | | |
| A06 | 250 | 180 | | | |
| A10 | 300 | 220 | | | |
| A25 | 350 | 250 | 3 | - | 21,0 |
| T10 | - | 275 | | | |
| A03 | 250 | 225 | | | |
| A06 | 280 | 250 | | | |
| A10 | 320 | 280 | 4 | - | 24,0 |
| A25 | 350 | 340 | | | |
| T10 | - | 360 | | | |
| A03 | 300 | 250 | | | |
| A06 | 340 | 275 | - | - | 24,0 |
| A10 | 375 | 320 | | | |
| A25 | 400 | 380 | | | |
| T10 | - | 400 | | | |

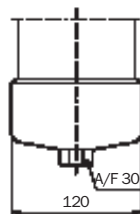
* Flow rates with 30 mm²/s fluid viscosity
** Weight including filter element

Lengths

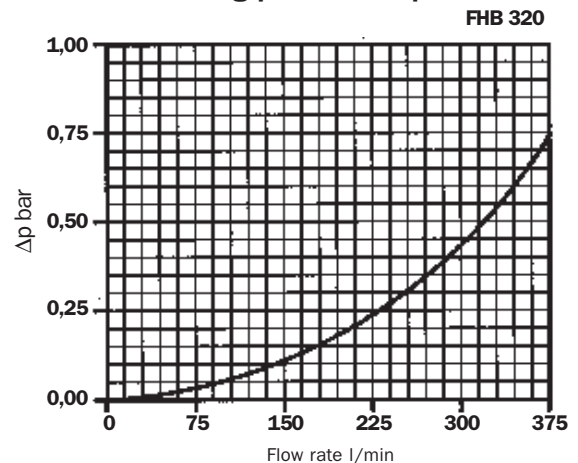
| Type | H |
|------|-----|
| 1 | 315 |
| 2 | 425 |
| 3 | 562 |
| 4 | 692 |



Only for FHB 320-4



Housing pressure drop curve



Pressure drop information

General

Pressure drop versus flow rate curve information for both housing and filter elements is in accordance with ISO 3968

Filter assembly pressure drop - $\Delta p_{\text{Total}} = \Delta p_{\text{Housing}} + \Delta p_{\text{Filter element}}$

Housing pressure drop - The housing pressure drop is proportional to the fluid density

Filter element pressure drop - Filter element pressure drop is proportional to kinematic viscosity therefore always check the fluid operating temperature and fluid type to obtain the working viscosity according to the following formula:

$$\Delta p_1 \text{ Filter element} = (\text{working viscosity} / \text{brochure viscosity}) \times \Delta p \text{ filter element}$$

Brochure viscosity 30 mm²/s (cSt)

Filter assembly sizing example

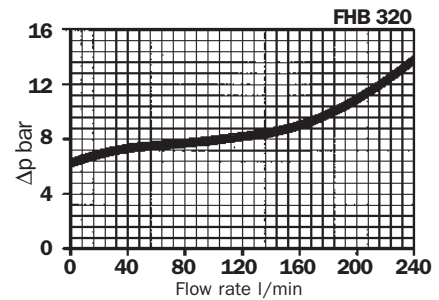
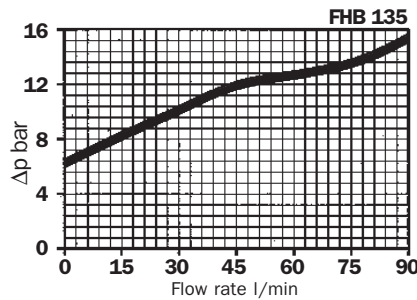
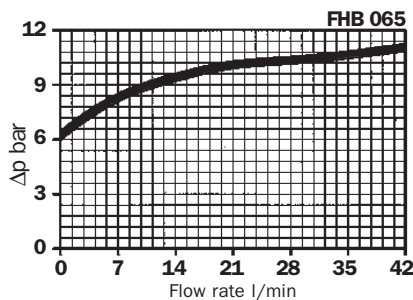
- Customer requires a 90 l/min filter assembly
- Mineral oil fluid: ISO VG 46 (46 mm²/s (cSt) at 40°C)
- A10 - 10 micron absolute filtration

Selection :

- **Housing pressure drop** - FHB 135-2 with 90 l/min $\Delta p = 0.2$ bar (see curve on page 7)
- **Filter element pressure drop** (brochure viscosity) - HP 135-2A10AN with 90 l/min $\Delta p = 0.55$ bar (see curve on page 10)
- **Filter element pressure drop** (working viscosity) - With 46 mm²/s (cSt) $\Delta p_1 = 0.55 \times (46/30) = 0.85$ bar
- **Filter assembly pressure drop** $\Delta p_{\text{Total}} = \Delta p_{\text{Housing}} + \Delta p_1 \text{ Filter element} = 0.2 + 0.85 = 1.05 \text{ bar}^*$ { *Acceptable pressure drop value as per our recommendations

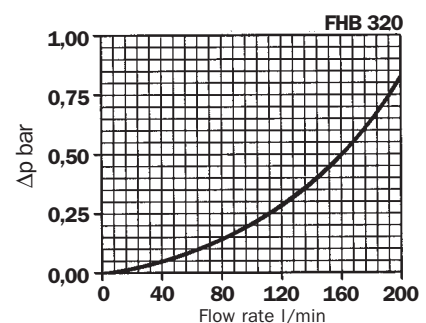
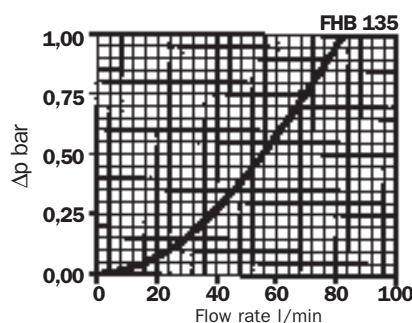
Bypass valves pressure drop

The curves were obtained using a mineral oil with a density of 0,86 kg/dm³.
The Δp varies proportionally to the density.



Reverse flow valves pressure drop

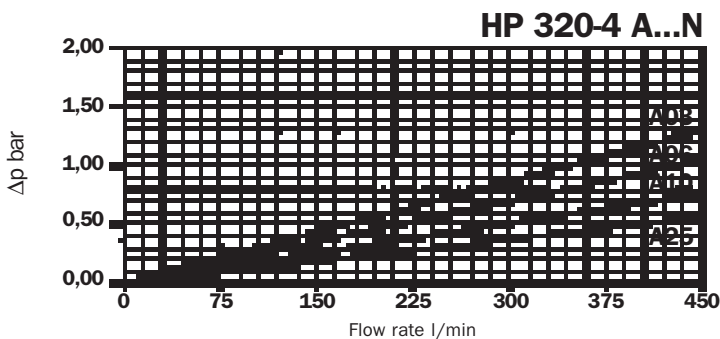
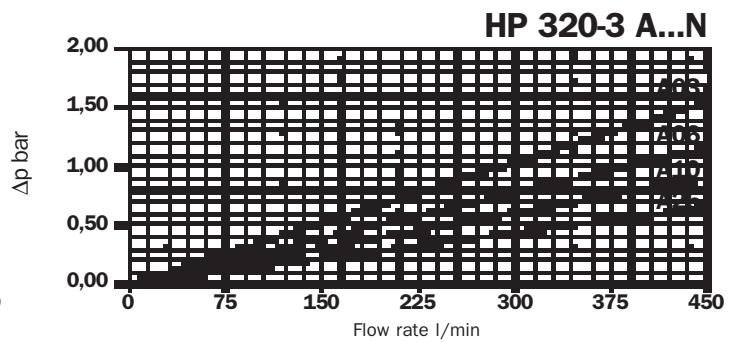
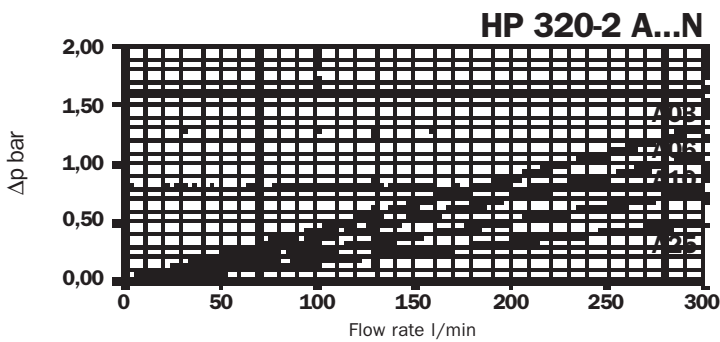
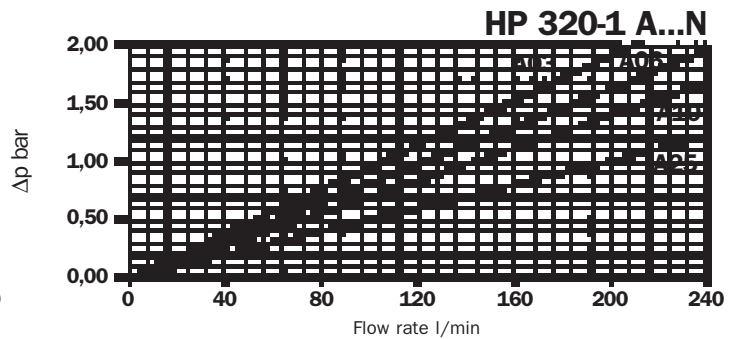
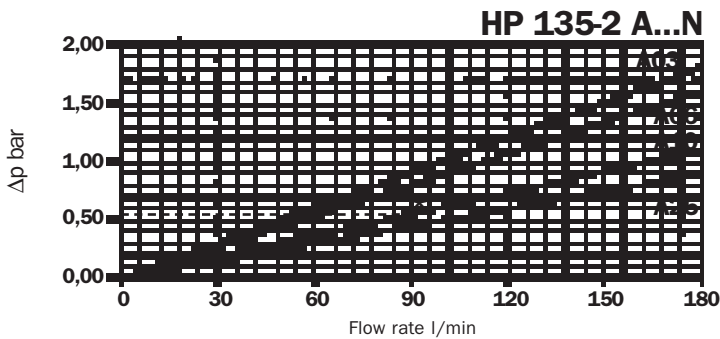
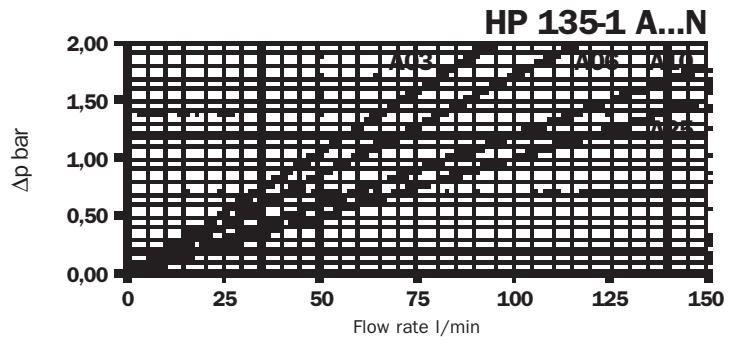
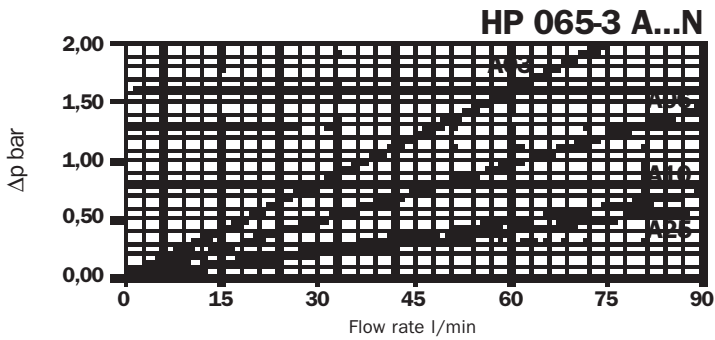
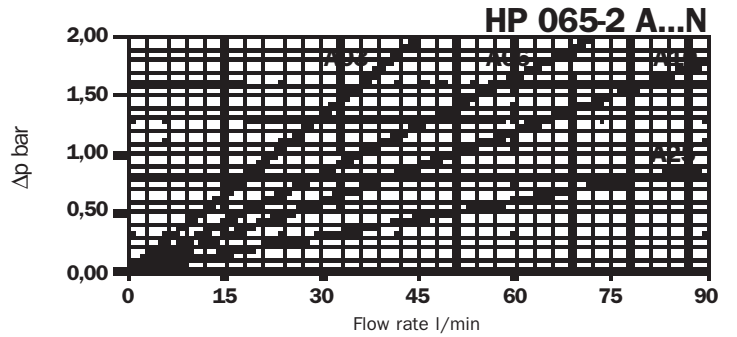
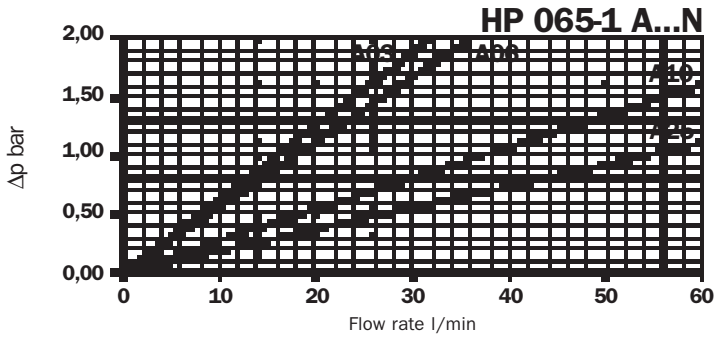
The curves were obtained using a mineral oil with a density of 0,86 kg/dm³.
The Δp varies proportionally to the density.



Filter elements - N - ΔP 20bar

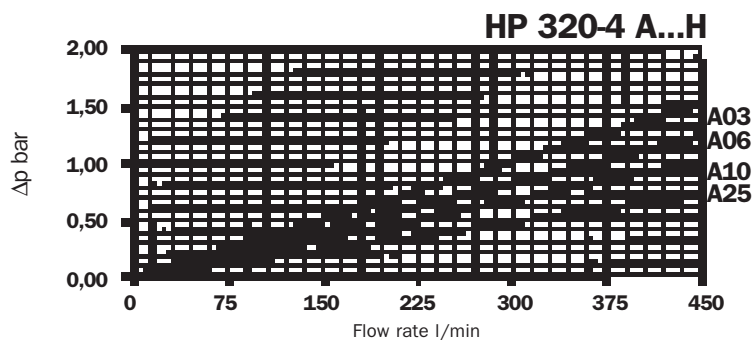
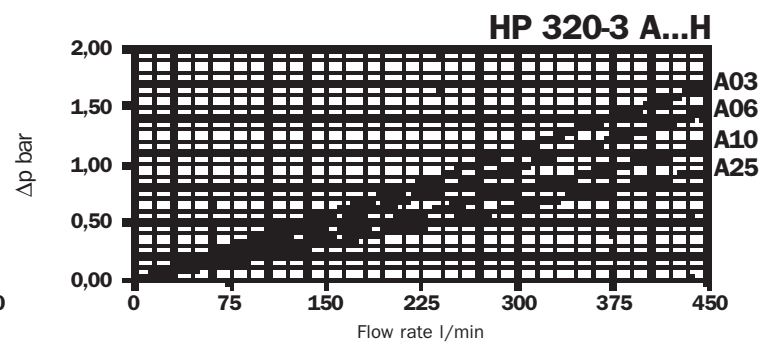
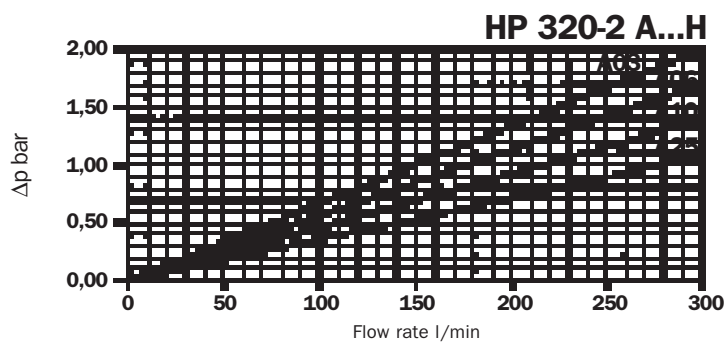
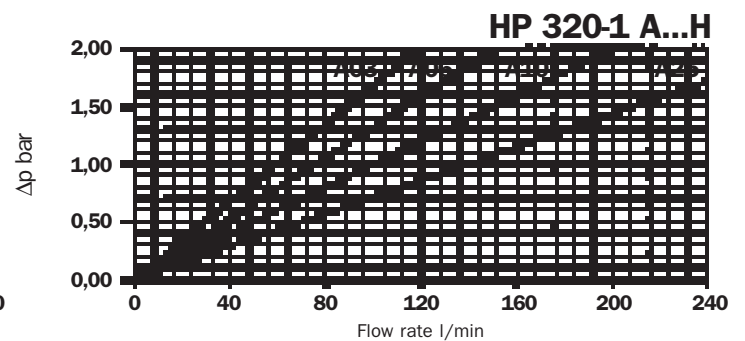
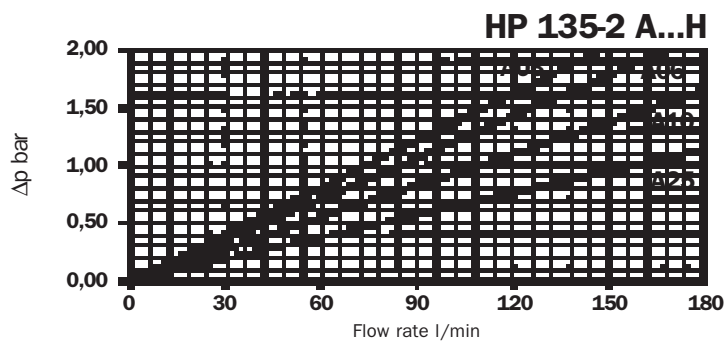
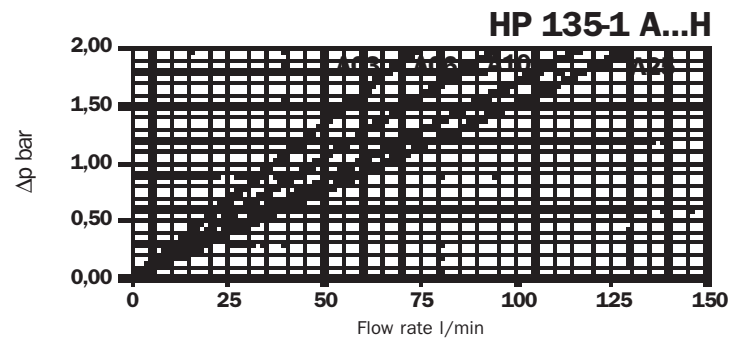
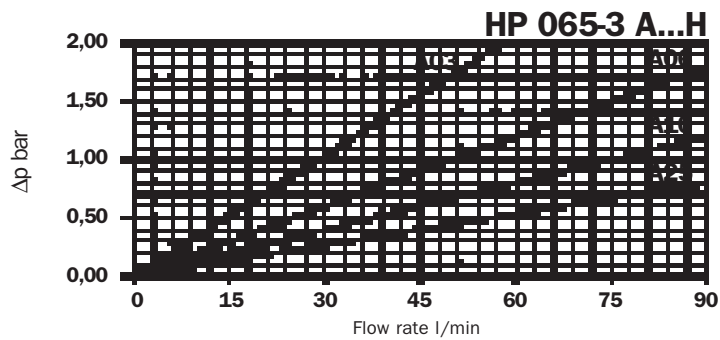
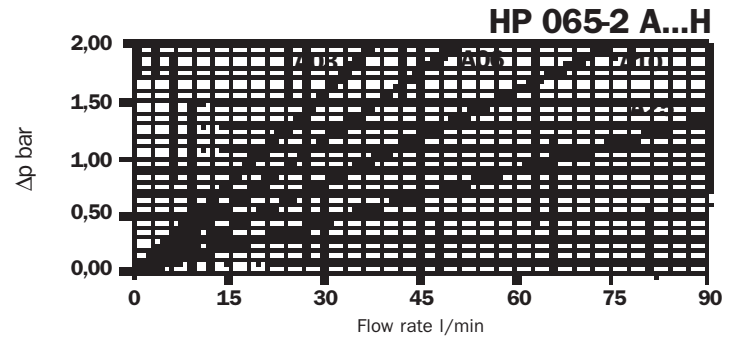
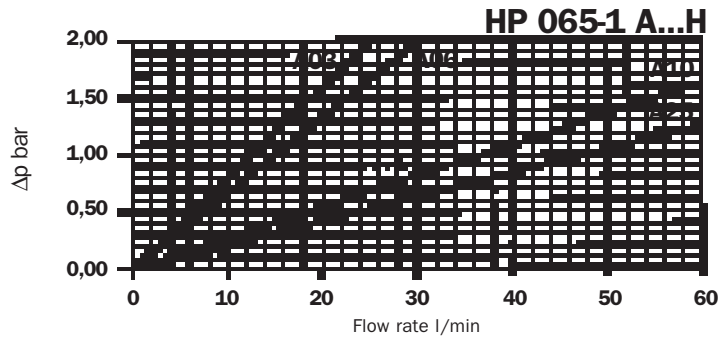
The curves were obtained using a mineral oil with a kinematic viscosity of 30 mm²/s (cSt).
The Δp varies proportionally to the fluid kinematic viscosity.

For the metal filter elements curves (M series), please consult our Sales and Network Organization



Filter elements - H - ΔP 210bar

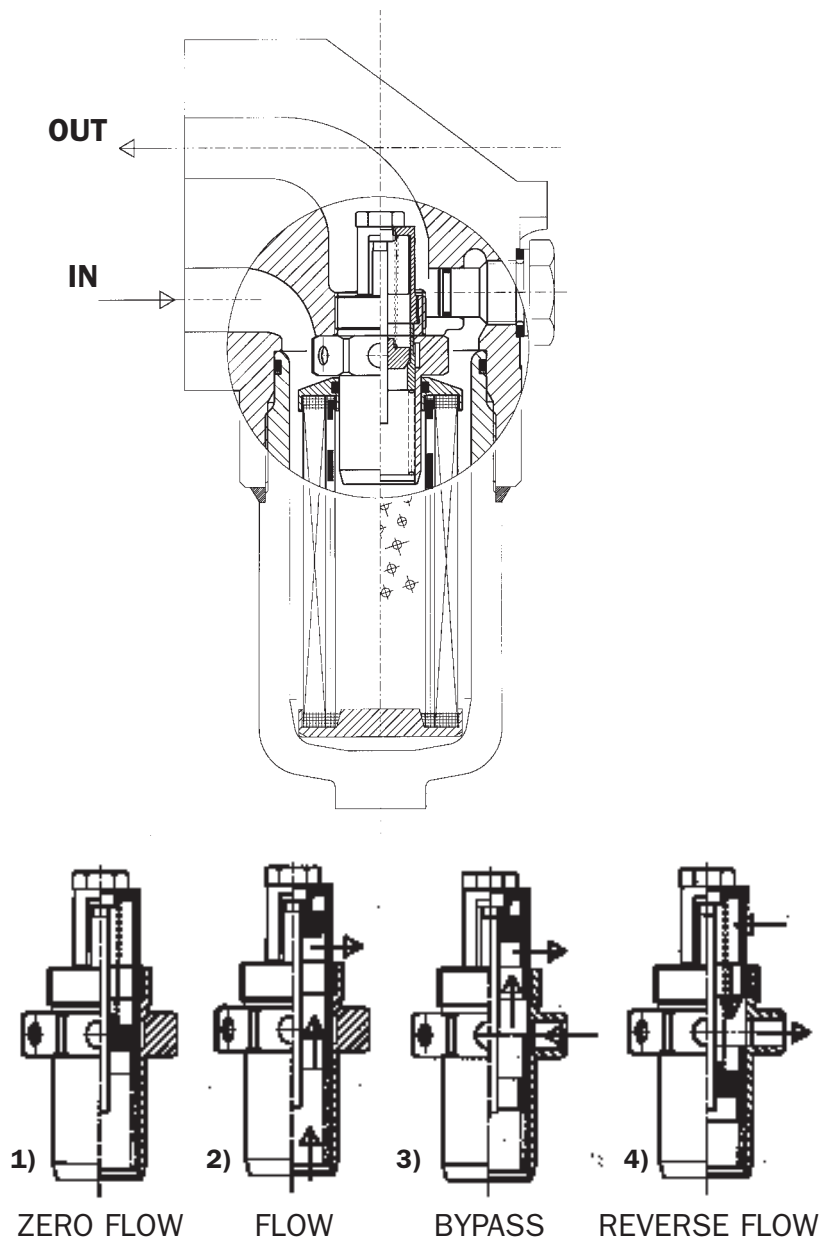
The curves were obtained using a mineral oil with a kinematic viscosity of 30 mm²/s (cSt).
 The Δp varies proportionally to the fluid kinematic viscosity.



| CONTAMINATION CODES ISO 4406 | | CORRESPONDENT CODES NAS 1638 | RECOMMENDED FILTRATION DEGREE | TYPICAL APPLICATIONS |
|------------------------------|------------------|------------------------------|-------------------------------|---|
| 5 μm | 15 μm | | $\beta_x \geq 200$ | |
| 12 | 9 | 3 | 3 | High precision and laboratory servo-systems |
| 15 | 11 | 6 | 3-6 | Robotic and servo-systems |
| 16 | 13 | 7 | 10-12 | Very sensitive systems where a high degree of reliability is required |
| 18 | 14 | 9 | 12-15 | General equipment of limited reliability |
| 19 | 16 | 10 | 15-25 | General equipment of limited reliability |
| 21 | 18 | 12 | 25-40 | Low - pressure equipment not in continuous service |

Reverse flow valve - Drawing

FHB 135 - FHB 320 SERIES



FHB

F1

Nominal sizes

065
135
320

Bowl lengths

FHB 065 = 1, 2, 3
FHB 135 = 1, 2
FHB 320 = 1, 2, 3, 4

Integral bypass valve

| | |
|---|--|
| S | Without bypass |
| B | With bypass |
| W | With reverse flow |
| R | With reverse flow + bypass (Not available for FHB 065) |

Seals

| | |
|---|------------------|
| A | Nitrile (Buna-N) |
| V | Viton |

Filter condition indicator

| | |
|-----|----------------------------|
| S | With threaded hole only |
| T2 | With plug |
| V7 | Visual 5 bar |
| V8 | Visual 7 bar |
| V9 | Visual 10 bar |
| N7 | Electrical 5 bar |
| N8 | Electrical 7 bar |
| N9 | Electrical 10 bar |
| E7 | Visual - electrical 5 bar |
| E8 | Visual - electrical 7 bar |
| E9 | Visual - electrical 10 bar |
| K7* | Visual - electrical 5 bar |
| K8* | Visual - electrical 7 bar |
| K9* | Visual - electrical 10 bar |

{ 1 - 24 Volt
 { 2 - 115 Volt
 { 3 - 230 Volt

*For K visual-electrical indicator, specify the voltage (f.i. K71 = LED 24 volt)

Collapse pressure series

| | |
|---|---------|
| N | 20 bar |
| T | 80 bar |
| H | 210 bar |

Filter elements

| | |
|-----|------------------------------|
| A03 | Inorganic microfibre Bx ≥200 |
| A06 | |
| A10 | |
| A25 | |
| M10 | Square wire mesh |
| M25 | |
| M60 | |
| T10 | Stainless steel wire mesh |
| T25 | |

HP

Replacement element

MP Filtri - Filtration products will only be guaranteed if original MP Filtri replacement elements and spares are used

Data hold in this publication are given only for indicative purposes. MP Filtri reserves to introduce modifications to describe items in every moment either for technical or commercial reasons. Copyright reserved.



A series of horizontal dashed lines for writing, alternating between blue and yellow colors. The lines are spaced evenly down the page.



**Head Quarter :****MP FILTRI S.p.A. Italy**

Via Matteotti, 2
20060 Pessano con Bornago (Milano) Italy
Tel. ++39.02/95703.1
Fax ++39.02/95741497-95740188
email: sales@mpfiltri.com
<http://www.mpfiltri.com>

**GREAT BRITAIN****MP FILTRI U.K. Ltd.**

Bourton Industrial Park
Bourton on the Water
Gloucestershire GL54 2HQ UK
Phone: 01451-822522
Fax: 01451-822282
email: sales@mpfiltri.co.uk
<http://www.mpfiltri.co.uk>

GERMANY**MP FILTRI D GmbH**

Am Wasserturm 5
D-66265 Heusweiler/Holz
Phone: 06806/85022-0
Fax: 06806/85022-18
email: mpfiltrink@aol.com

FRANCE**MP FILTRI FRANCE**

B.P. 325
01603 Trevoux Cedex
Tel: 04.74.08.84.78
Telefax: 04.74.08.80.45
email: mpfiltrifrance@wanadoo.fr

USA**MP FILTRI USA Inc.**

2055 Quaker Pointe Drive
Quakertown, PA 18951
Phone: 215-529-1300
Fax: 215-529-1902
email: mpusasales@aol.com
<http://www.mpfiltriusa.com>

CANADA**MP FILTRI CANADA Inc.**

210 Jacob Keffer Parkway Concord,
Ontario Canada L4K 4W3
Phone: 905-303-1369
Fax: 905-303-7256
email: mail@mpfiltricanada.com
<http://www.mpfiltricanada.com>